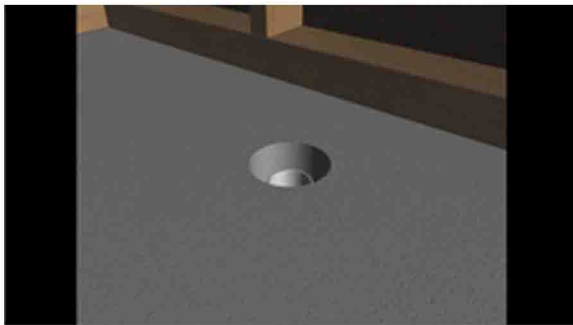




Welcome to myshowergrateshop  
This is a printout reference guide to  
a typical shower grate instalation



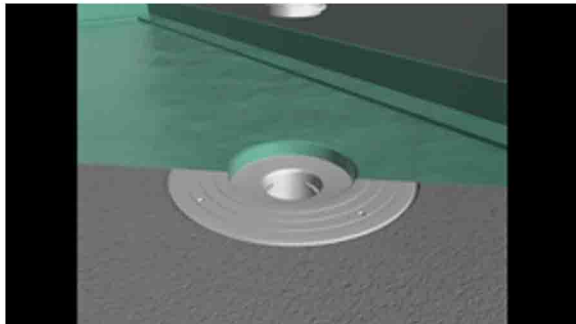
Exploded view of a shower grate base,  
grate top and pieces of a typical  
puddle flange



Bring pipe through your flooring. We  
recommend to bring the shower grate  
approx (a)100mm from the wall and  
approximately (b)50mm fom each side  
wall to allow for your tiles and glue



Recess concrete or AC sheet using a  
grinding wheel so that the puddle  
flange sits flat with the floor. Glue  
screw the puddle flange into position.  
Refer to manufacturers directions



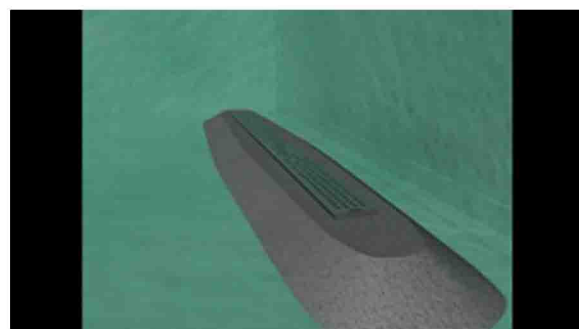
Have approved waterproofing contractor waterproof the area insuring the membrane goes onto and into the puddle flange



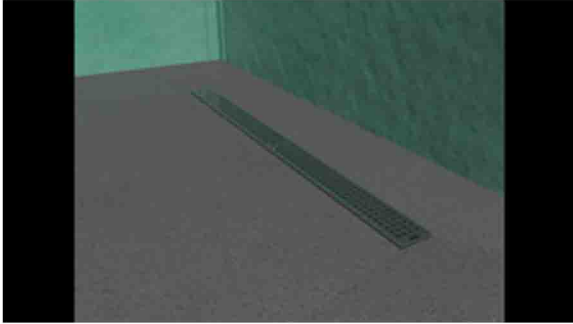
After the waterproofing is complete re-install puddle flange cap to prevent any building debris from entering plumbing untill ready to bed and tile



Adjust the height of the the puddle flange and/or shower grate so that your shower grate is at preferred finished height



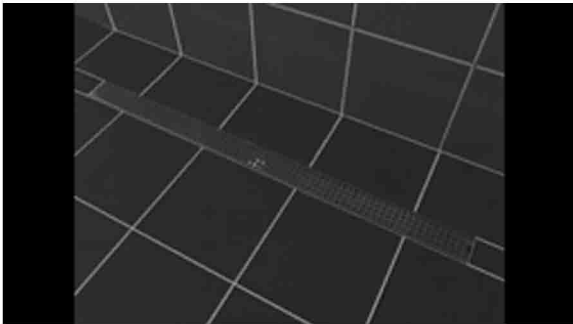
Pack you bedding material under and around your shower grate. Bedding material should then be scraped away from the shower grate to allow for tile and glue thickness. Insure the shower grate is plumb for aft and Left and Right



Fill in the remainder of the bedding ensuring a fall to the shower grate as per local building guidelines



Finish en suite in desired tile and finishings



Close-up of a finished shower grate with the recommended 100mm from wall and 50mm from each side wall.